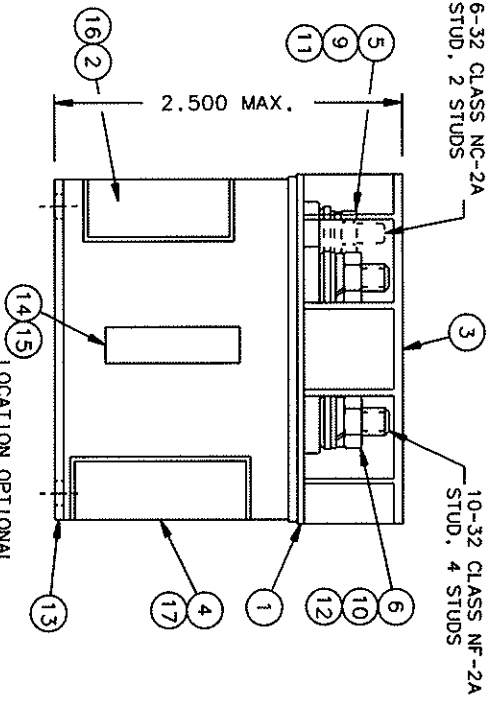
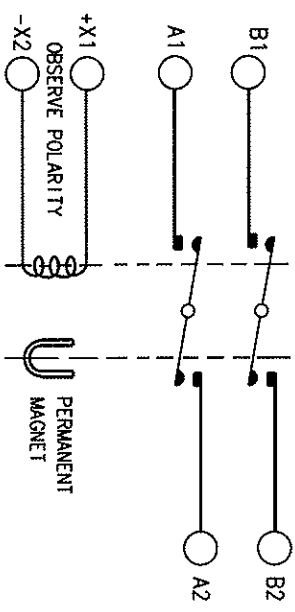
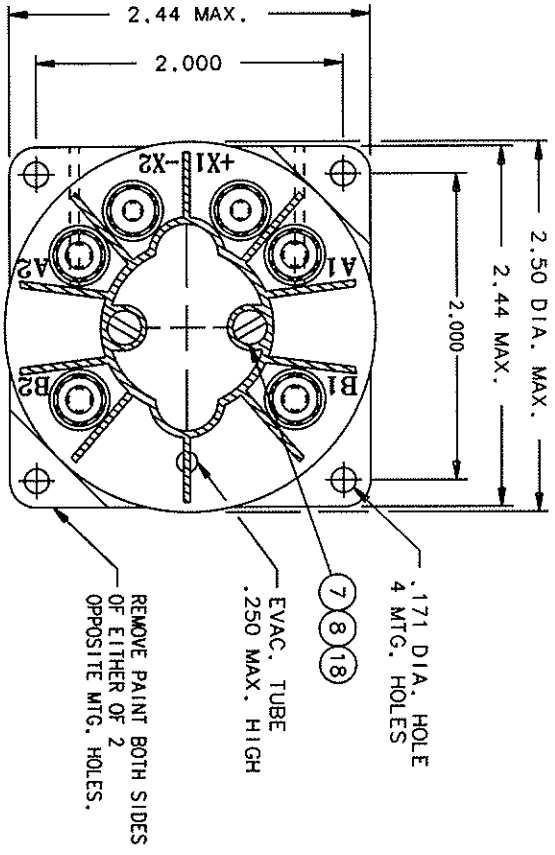


FAA/PMA

REV.	DESCRIPTION	DATE	APPROVED
K	25321 (UPDATE FRONT VIEW (REF. ITEMS 16, 17)	94/01/03	WS
L	25370 (UPDATE P/L - CORRECTED GEOMETRY	94/01/07	WS
M	33300 (FIND NO 18 ADDED	97/07/11	RS
N	35092 (FIND NO 18 P/N WAS 51702-204	98/03/16	RS



CONSTRUCTION
 CONTACTS
 CONTACT RATING
 COIL CURRENT AT
 NOMINAL 28 V.D.C.
 COIL RATING
 PICKUP
 DROPOUT
 RATED DUTY
 ALTITUDE
 MAX. WEIGHT
 MAX. OPERATING AMBIENT TEMP.

HERMETICALLY SEALED
 2PST NO DOUBLE BREAK
 50 AMP. 28 VOLT RES.
 0.14 AMP. AT 25°C.
 28 VDC
 18 V MAX. HOT
 7 VOLTS -5.5
 CONTINUOUS
 50,000 FT.
 11.5 OZ.
 71°C

QTY	PART OR IDENTIFYING NO	DESCRIPTION	MATERIAL
2	51701-180	WASHER - 3/16 X .103 X .015	MYLAR
1	39529-002	OVERLAY - WIRING DIAGRAM	
1	39529-001	OVERLAY - NAMEPLATE	
1	39529-024	OVERLAY	
1	58400-099	PLATE - FAA/PMA	
1	20223-010	PRIMARY ASSEMBLY	
4	51702-844	WASHER - 3/8 X 13/64 X .032 FLAT	BRASS
2	51702-204	WASHER - 3/8 X 9/64 X .032 FLAT	BRASS
4	51810-054	WASHER - LOCK NO. 10 SPLIT	AN935-B10 BRONZE
2	51806-014	WASHER - LOCK NO. 6 SPLIT	AN935-B6 BRONZE
2	51805-011	WASHER - NO. 5 SPLIT	AN935B5L BRONZE
2	51205-591	SCREW - 5-40 X 3/8 RD. HD.	BRASS
4	50410-054	NUT - 10-32 X 5/16 X 9/64 HEX.	BRASS
2	50406-034	NUT - 6-32 X 1/4 X 5/64 HEX.	BRASS
4	20265-001	PLATE - WIRING DIAGRAM	BRASS
1	15549-001	SHIELD - TERMINAL	
2	16043-001	PLATE - NAME	
1	15537-036	PLATE - BASE COVER	

UNLESS OTHERWISE SPECIFIED DIMENSIONS ARE IN INCHES	2 PL. DEC. 2 PL. DEC. ANGLES ±.030 ±.010 ±.1°
MATERIAL	
DR BY RLS 98/03/30	
CHK BY KS 98/03/30	
ENGR BY [Signature]	
RELEASE BY [Signature]	
CONTR NO.	
GOVT APPVL	

HARTMAN ELECTRICAL MANUFACTURING
 MANSTFIELD, OHIO

CONTACTOR - 2PST
 HERMETICALLY SEALED

SIZE CODE IDENT DWG NO.
 C 74063 DH-7MN

SCALE NONE SHEET

093