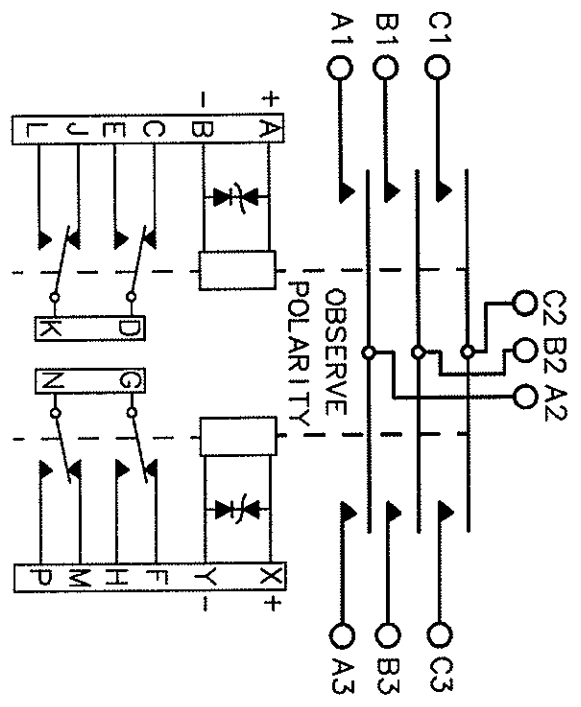
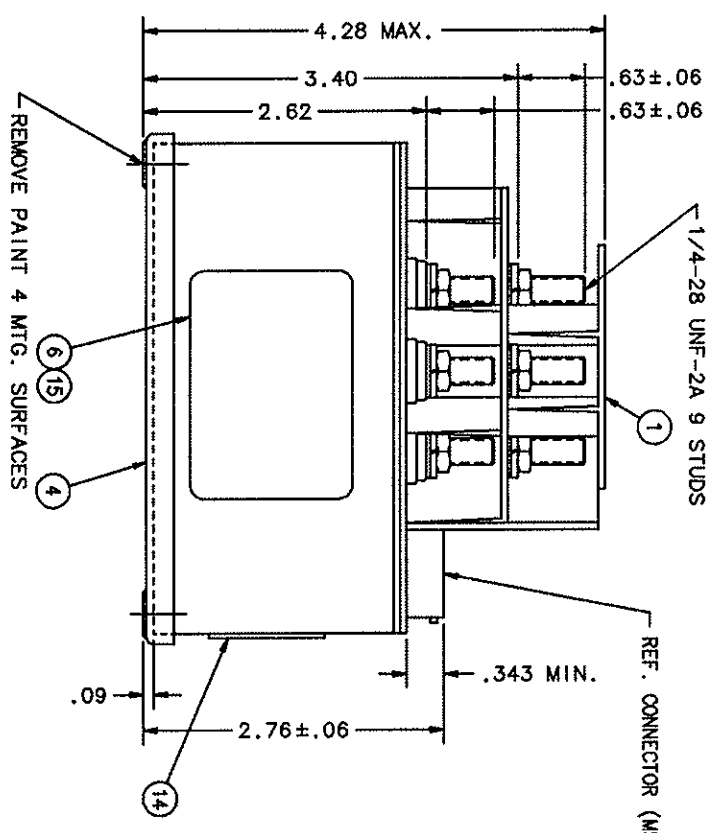
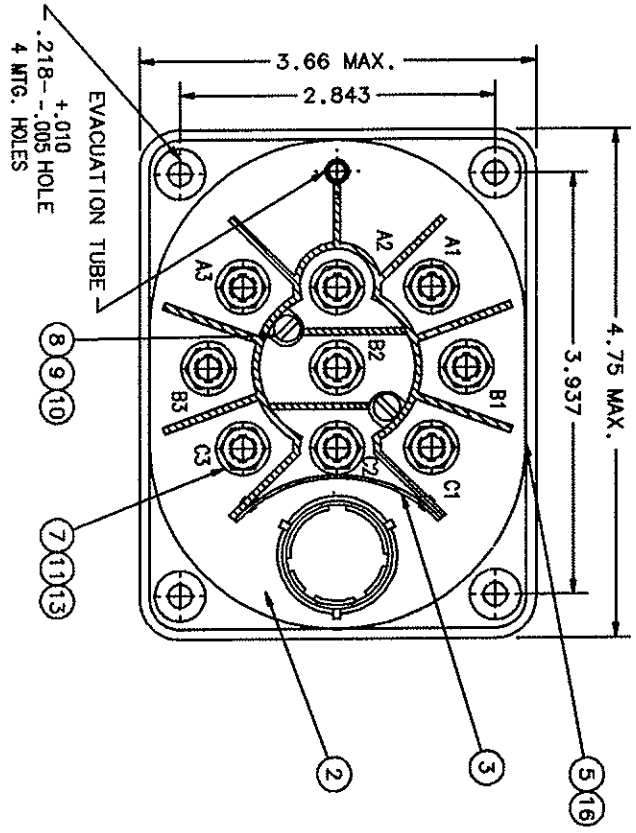


REVISIONS		RELEASED	DATE	APPROVED
REV.	DESCRIPTION			
B	25073 ITEM 6 WAS 16043-001		11-12-93	
C	25476 UPDATE P/L CORRECT CONNECTOR		1/26/94	



REF. CONNECTOR (MSS313H-16C23P)

REV	QTY	PART OR IDENTIFYING NO	DESCRIPTION	FINISH	DRWG OR SPECIFICATION	MATERIAL OR NOTE
16	1	38529-033	OVERLAY			
15	1	38529-001	OVERLAY			
14	1	25695-001	PLATE-WASHER		ANG60-416 1	STEEL
13	9	51703-081	WASHER-1/2 X 17/64 X 1/32 FLAT			
12						
11	9	51807-041	WASHER-1/4 SPL IT, LOCK		MSS3538-44	STEEL
10	2	51805-011	WASHER-5 SPL IT, LOCK			BRONZE
9	2	51701-180	WASHER-.015 X .103 X 3/16			INVAR
8	2	51205-411	SCREW-.40 X 1 3/8 RD HD.			BRASS
7	9	50407-051	NUT-1/4-28 X 3/8 X 1/8 HEX.			STEEL
6	1	16043-078	PLATE-WASHER			
5	1	40627-001	PLATE-WASHER			
4	1	19959-070	CONNECTOR ASSEMBLY-PRIMARY			
3	1	19689-010	TERMINAL SHIELD ASSEMBLY			
2	1	18345-003	PLATE-BASE COVER			
1	1	17540-001	SHIELD-TERMINAL TOP			

MAI P/N	76AS88016-103
FS-X PROGRAM	
DR BY	M.B. 1/27/94
CHK BY	1-27-94
ENGR	1-27-94
MFG	1-27-94
RELEASE	
CONTR NO.	
GOVT APPL	

SIZE	CODE	DRWG NO.
C	74063	DH-31-DAA
SCALE	NONE	SHEET 1 OF 2

HARTMAN ELECTRICAL MANUFACTURING
MANSFIELD, OHIO
CONTACTOR-3PDT CENTER OFF
120 AMP, 115 VAC, 400 HZ
093

REV.	REVISIONS	DESCRIPTION	RELEASED DATE	APPROVED
	SEE SHEET 1 FOR REVISIONS			

DESIGN SPECIFICATIONS

<p>CONSTRUCTION HERMETICALLY SEALED</p> <p>MAIN CONTACTS CONFIGURATION 3PDT, C.O. 115/208 VAC, 400 HZ.</p> <p>VOLTAGE (NOMINAL) 115/208 VAC, 400 HZ.</p> <p>CURRENT (AMPS): RESISTIVE* 120 INDUCTIVE 120 MOTOR 60 OVERLOAD 800 RUPTURE 1000</p> <p>AUXILIARY CONTACTS CONFIGURATION 4PDT 28 VDC, 115 VAC, 400 HZ.</p> <p>VOLTAGE (NOMINAL) 28 VDC, 115 VAC, 400 HZ.</p> <p>CURRENT (AMPS): RESISTIVE 5 INDUCTIVE 3 LAMP 2</p> <p>COIL CONTINUOUS 18-30 VDC 30 VDC 15 VDC AT 25°C 2.0 TO 7.0 VDC DROPOUT VOLTAGE* 100 ± 10% COIL RESISTANCE (OHMS) .350 AT 25°C COIL CURRENT (MAX.)* ±42V. COIL TRANSIENT VOLTAGE (MAX.)*</p>	<p>OPERATING TIME* (INCLUDING BOUNCE) 50 MS MAX. 40 MS MAX. 2 MS MAX. 5 MS MAX. 40 MS MAX.</p> <p>RELEASE TIME* (INCLUDING BOUNCE) CONTACT BOUNCE (MAIN)* CONTACT BOUNCE (AUX.)* TRANSFER TIME* (INCLUDING BOUNCE)</p> <p>LIFE ELECTRICAL (MIN.) MECHANICAL (MIN.) 50,000 CYCLES 100,000 CYCLES</p> <p>DIELECTRICAL STRENGTH AT SEA LEVEL (1 MIN.)* MAIN CONTACTS TO ALL POINTS 1500 VRMS AUX. CONTACTS TO ALL POINTS 1250 VRMS COIL TO ALL POINTS 1050 VRMS</p> <p>DIELECTRICAL STRENGTH AT ALTITUDE MAIN CONTACTS TO ALL POINTS 700 VRMS AUX. CONTACTS TO ALL POINTS 500 VRMS COIL TO ALL POINTS 500 VRMS</p> <p>INSULATION RESISTANCE INITIAL (500 VDC) 100 MEGOHM (MIN.) POST ENVIRONMENTAL TEST (500 VDC) 100 MEGOHM (MIN.)</p> <p>TEMPERATURE RANGE -55°C TO +85°C 70,000 FT. 10 G'S, 5 TO 2000 HZ. VIBRATION (SINUSOIDAL) SHOCK (11 MILLISECONDS, HALF SINE WAVE) 15 G CONTACT OPENING UNDER VIBRATION & SHOCK (MAX.) 10 MICROSECONDS</p>
--	---

NOTES:

1. THIS UNIT IS DESIGNED TO MEET THE APPLICABLE PORTIONS OF MIL-R-6106.
2. ITEMS MARKED BY ASTERISKS ARE 100% TESTED. CONTACT LOADS VERIFIED BY MILLIVOLT DROP.

WEIGHT*

2 LBS., 8 OZ.

UNLESS OTHERWISE SPECIFIED DIMENSIONS ARE IN INCHES TOLERANCES ON		MIL P/N 76AS88016-103 FS-X PROGRAM		HARTMAN ELECTRICAL MANUFACTURING MANSFIELD, OHIO	
2 PL. DEC.12 PL. DEC. ANGLES	* 1°	DR BY T.M.B.	1/27/94	CONTACTOR-3PDT CENTER OFF	120 AMP, 115 VAC, 400 HZ
ENG BY	1-27-84	ENG BY	1-27-84	SIZE	CODE TOLERANCE DIMS NO.
MEG	1-27-84	MEG	1-27-84	C	74063
RELEASE		CONTR NO.		SCALE	NONE
GOVT APPVL					DH-31-DAA
					SHEET 2 OF 2